

Smart Classroom Instructions

If you are having difficulties using equipment in this room, call extension **3166** SCIENCE B 133

Powering Up the System

- 1) Make sure the master power is switched on.
- 2) To start the projector, press the On button on the white video switch box.
- 3) Power up the PC.
- 4) Follow login instructions for:
Windows
 - a. Control - Alt - Delete
 - b. Click OK
 - c. Enter user name and password
 - d. Click Enter



Using the Headphone Minijack

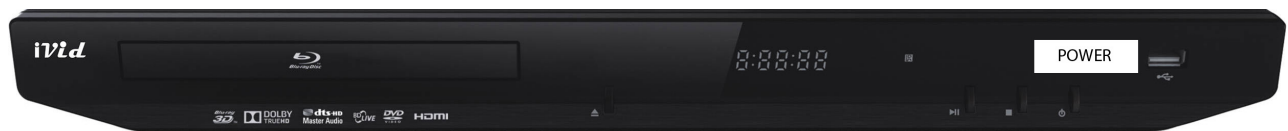
- 1) Set video switch box to Audio Only
- 2) Connect minijack to device
- 3) Adjust volume



Sound and DVD/Blu-Ray

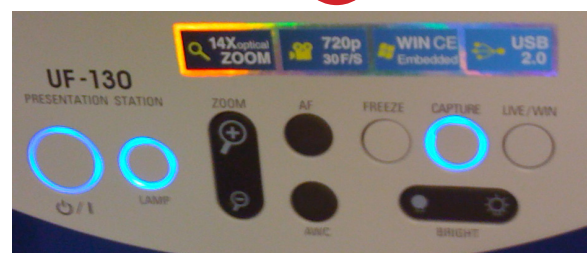
Playing a DVD/Blu-Ray

- 1) Set display switch box to **Blu-Ray**
- 2) Insert media.
- 3) Use on-screen controls to control playback



Using the Document Camera

- 1) Set display switch box to **Document Camera**.
- 2) Power on the **Document Camera**.
Note that there is no need to have the computer turned on to use the document camera.
- 3) Press the **Live/Win** button to switch between showing the Windows desktop and showing the camera image full-screen.



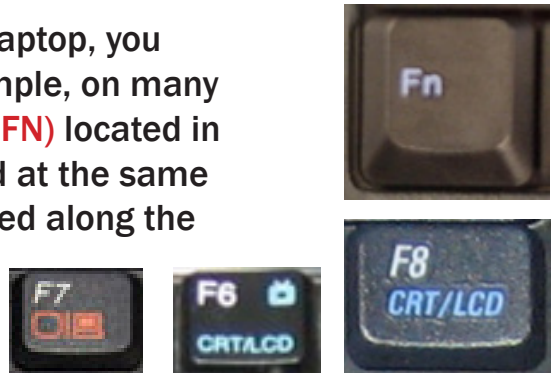
Using a Laptop

- 1) Shut down your laptop
- 2) Press Laptop button on control panel
- 3) Connect the **Laptop Video cable (VGA or HDMI)** to the video output port on your laptop.
Please note: the Laptop Video cable is VGA-compatible only. Certain laptop models will require a DVI-to-VGA adaptor or a Mini-VGA adaptor. Consult your owner's manual for further information.
- 4) For Internet connectivity, connect to HSU Wireless or connect the **green laptop network cable** to your laptop.
Please note: you will need to "register" your laptop before connecting to the campus network. Contact your college ITC or the Help Desk for further information.
- 5) Connect your laptop's AC adaptor to a power outlet and start up your laptop.
- 6) If you still do not see an image, refer to the **laptop troubleshooting guide** later in these instructions.
- 7) When finished, shut down your laptop and disconnect all cables.
- 8) Proceed to shutting down the rest of the equipment. Follow the instructions later in this guide, **Powering Down the System**.



Laptop Troubleshooting

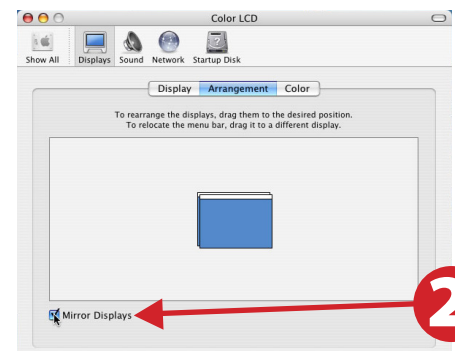
For PC Laptops: Depending on your model of laptop, you may need to toggle the display mode. For example, on many laptops, you must hold down the **function key (FN)** located in the lower left-hand corner of the keyboard, and at the same time, press the **video toggle key**, which is located along the top of the keyboard. Look for the text **CRT/LCD** or an icon of a **display and a laptop**.



Examples of video toggle keys

For Mac Laptops:

- 1) Go to **System Preferences/Display**.
- 2) Select the **Arrangement** tab and check the **Mirror Displays** box.



Powering Down the System

- 1) Press the Off button on the control panel to shut down the projector
- 2) Power down Computer

Windows

Start Menu -> Shut Down -> Click OK



Who to Call for Assistance

If you are having any difficulties using equipment in this room, call extension **3166**