

## vLinux How-to for On-campus Personal Laptop or Home Use


Step 1. Download the NoMachine Enterprise Client for your platform (toward the bottom of the page):


<https://www.nomachine.com/download-enterprise#NoMachine-Enterprise-Client>




### NoMachine Enterprise Client

 NoMachine Enterprise Client for Windows

 NoMachine Enterprise Client for Mac

 NoMachine Enterprise Client for Linux

 NoMachine Enterprise Client for Raspberry Pi

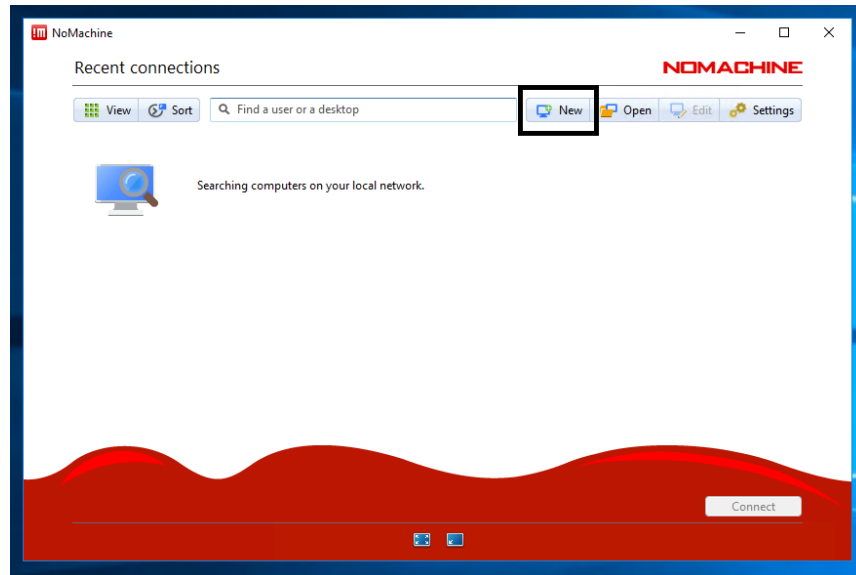
 [Learn more](#)

Step 2. Install the NoMachine Enterprise Client:

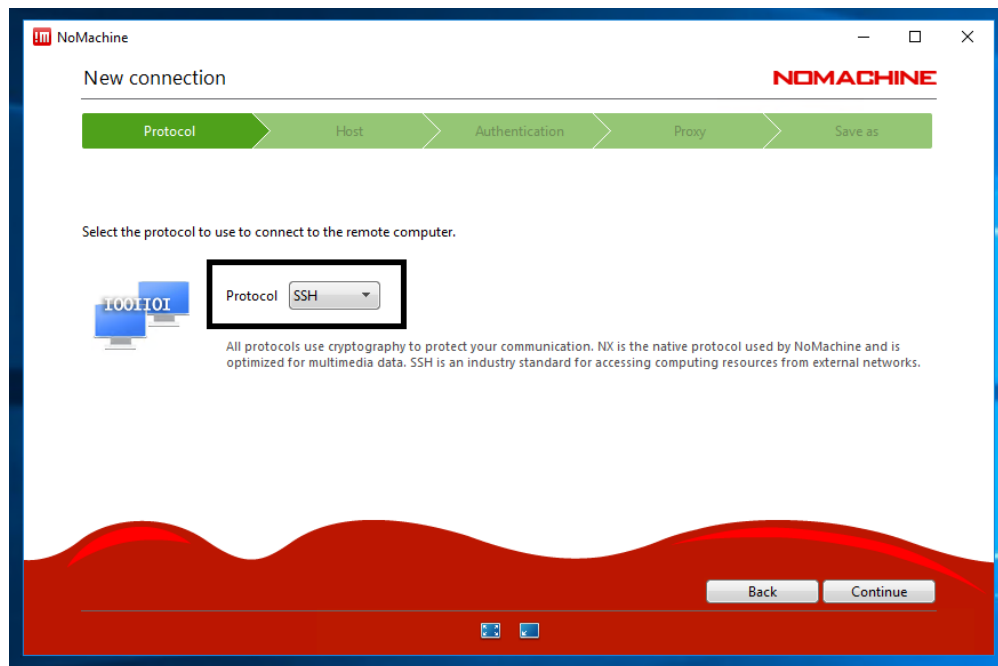


### Step 3. Configure the NoMachine Enterprise Client

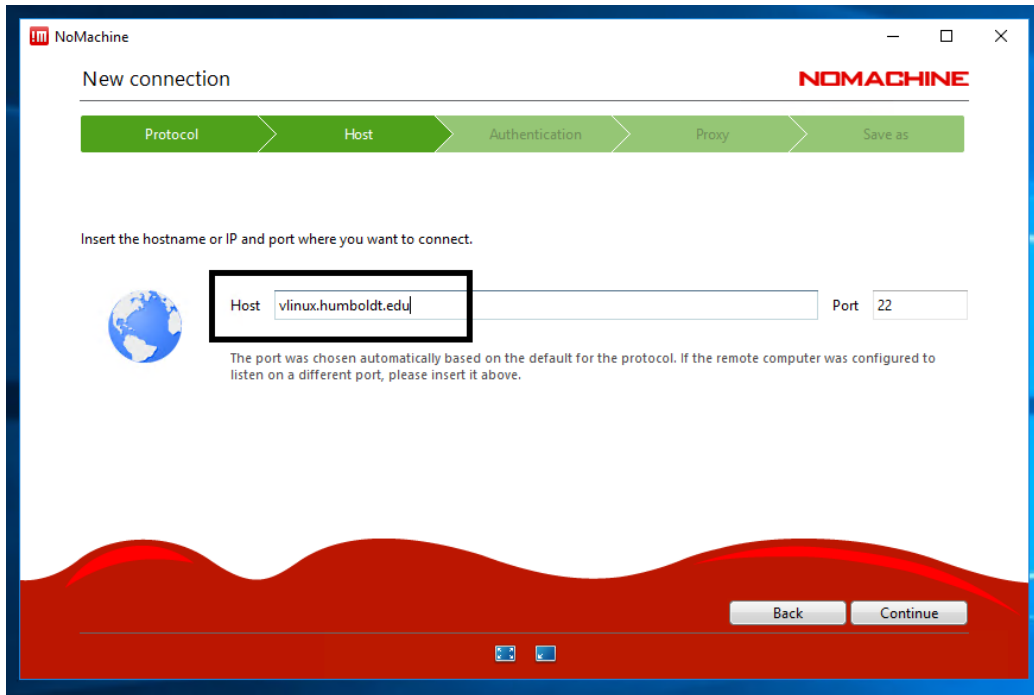
Click on the **New** button:



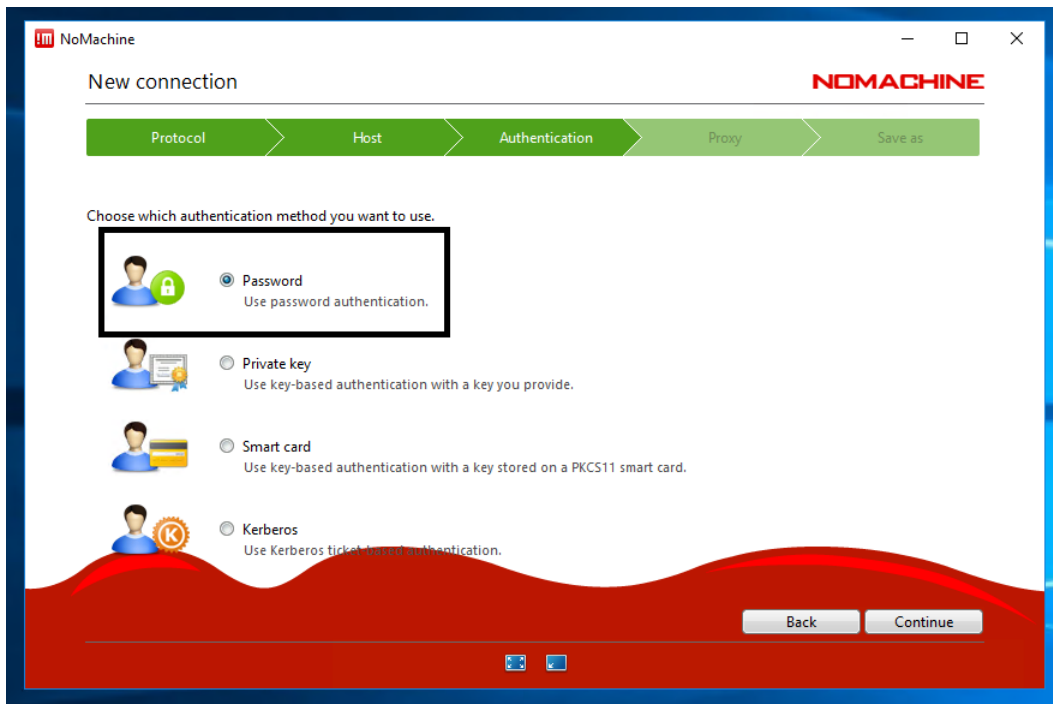
Select SSH from the **Protocol** drop-down list and click **Continue**:



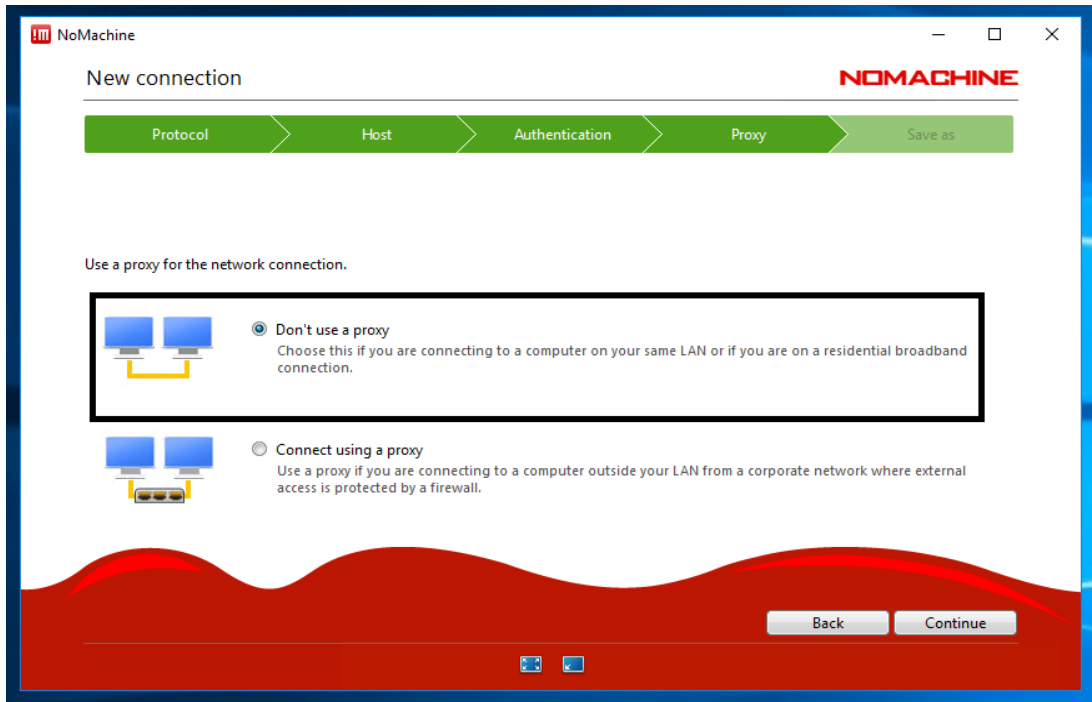
Enter `vlinux.humboldt.edu` as the **Host** and click **Continue**



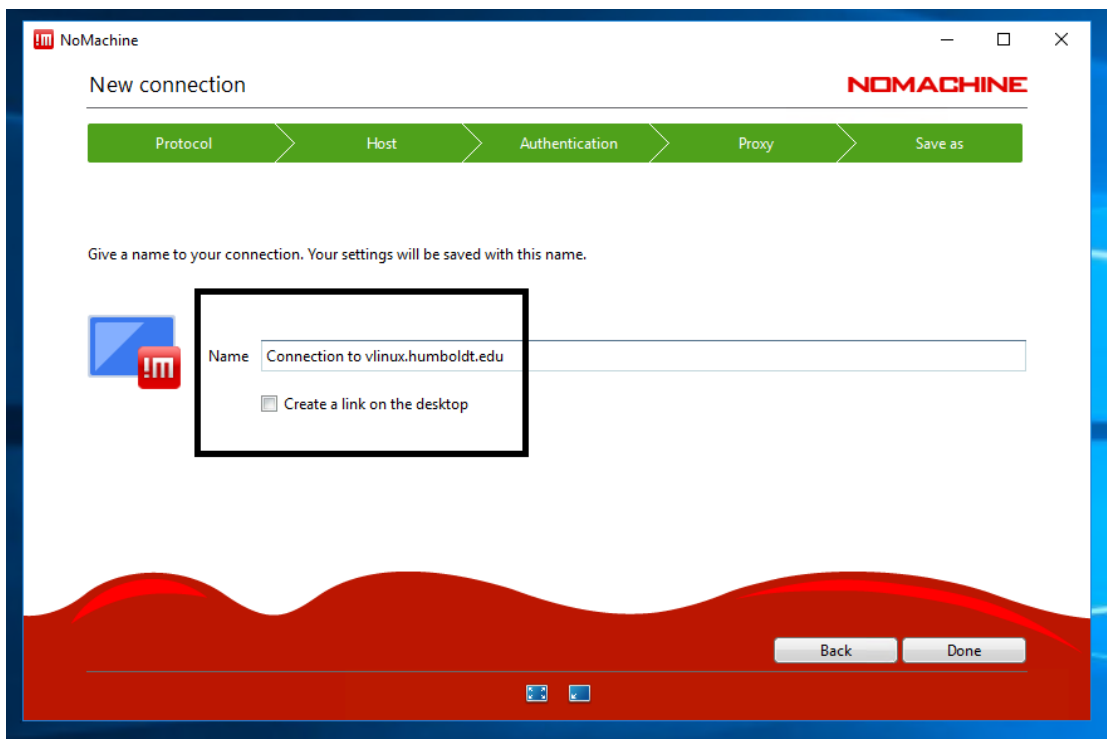
Choose **Password** as your authentication method and click **Continue**:



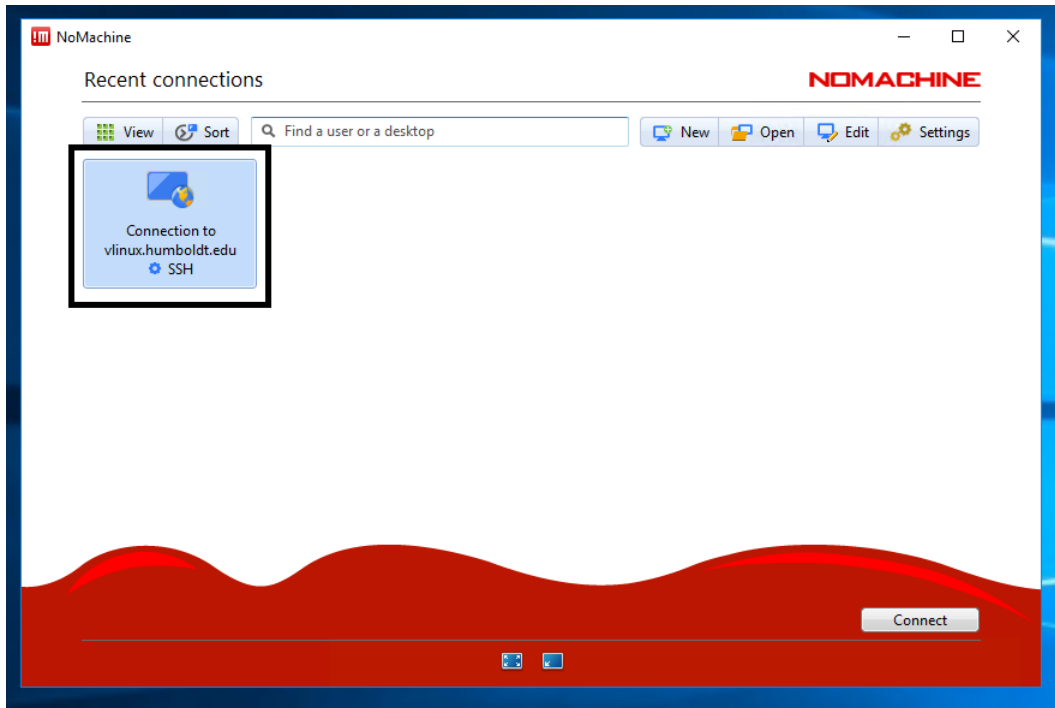
Choose **Don't use a proxy** for your network connection and click **Continue**:



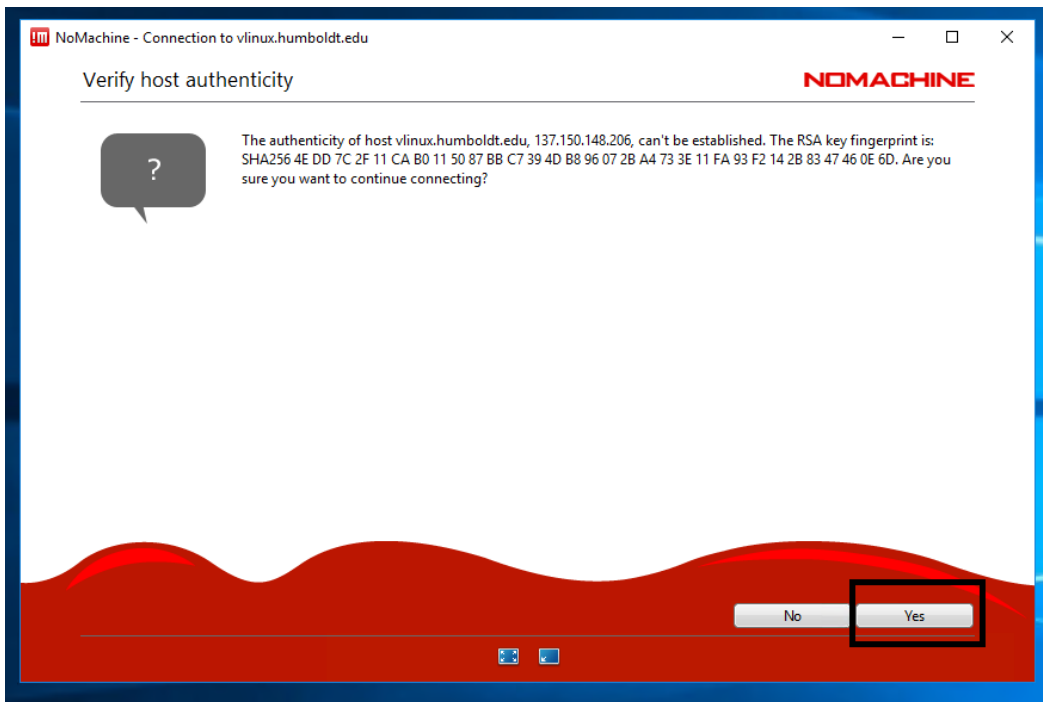
Enter a name for your connection and click the checkbox if you want to create a desktop shortcut to the NoMachine Enterprise Client. Click **Done**.



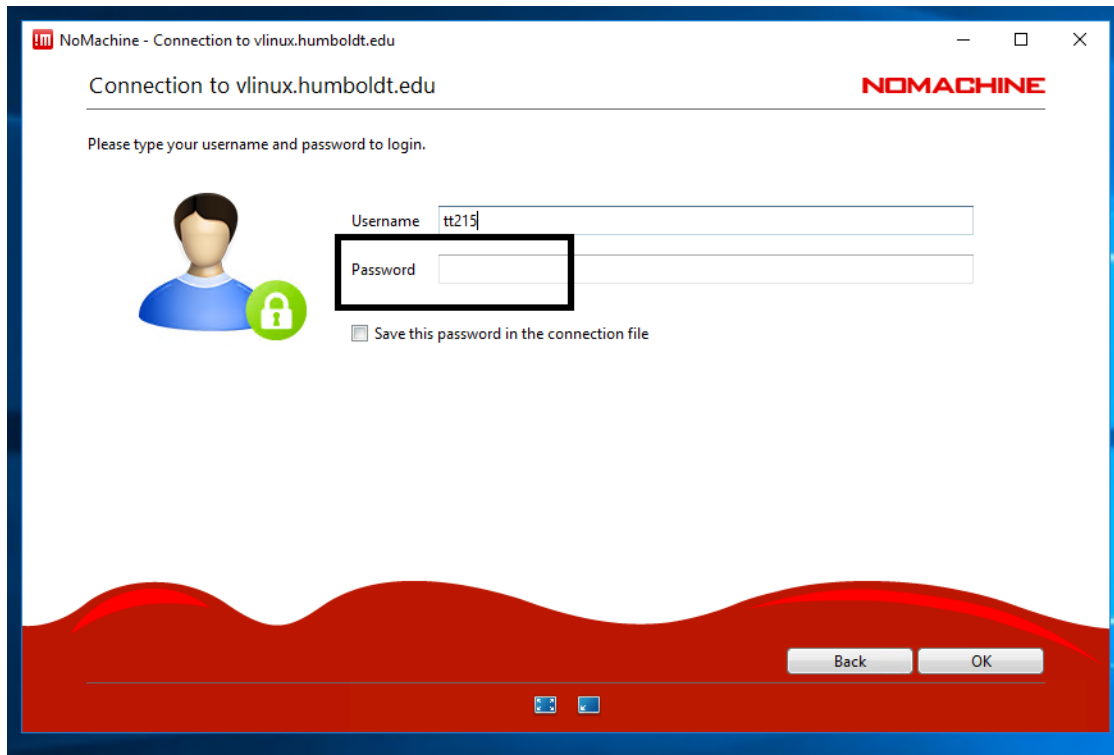
Select your connection and click **Connect**:



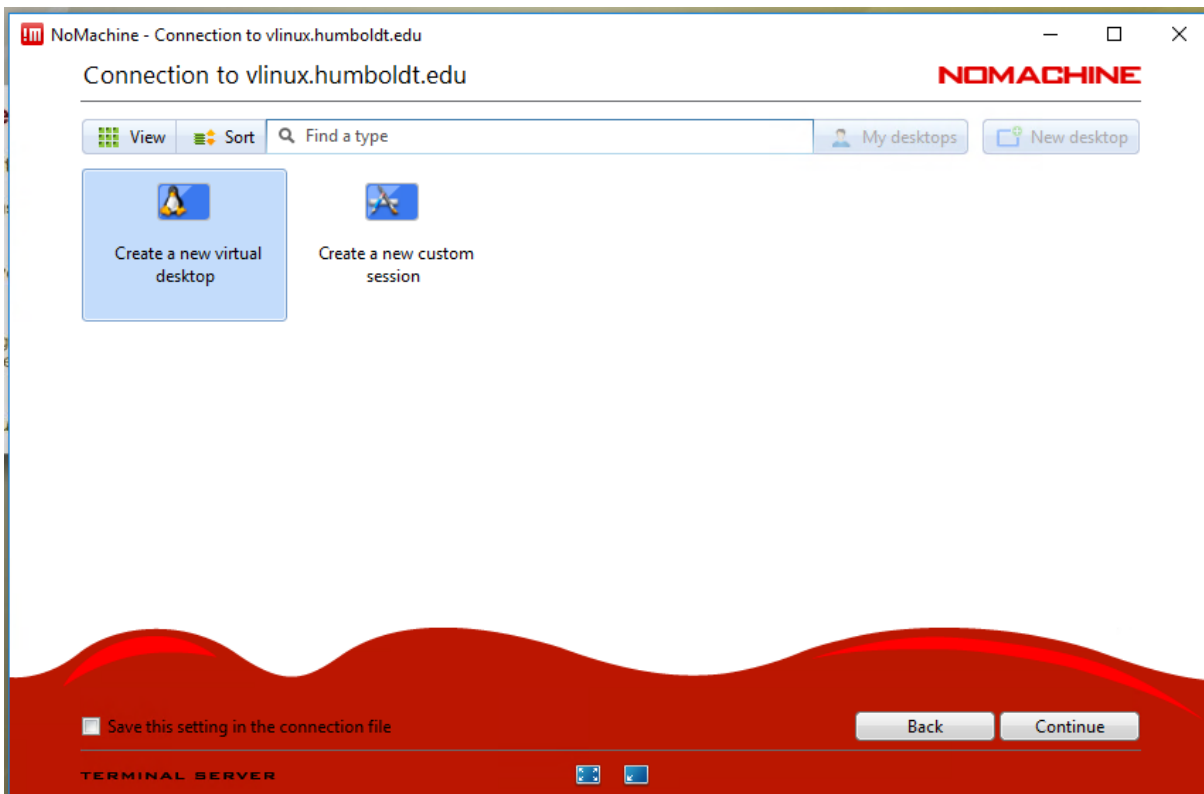
Click **Yes** to accept the RSA host key after verifying the host's authenticity:



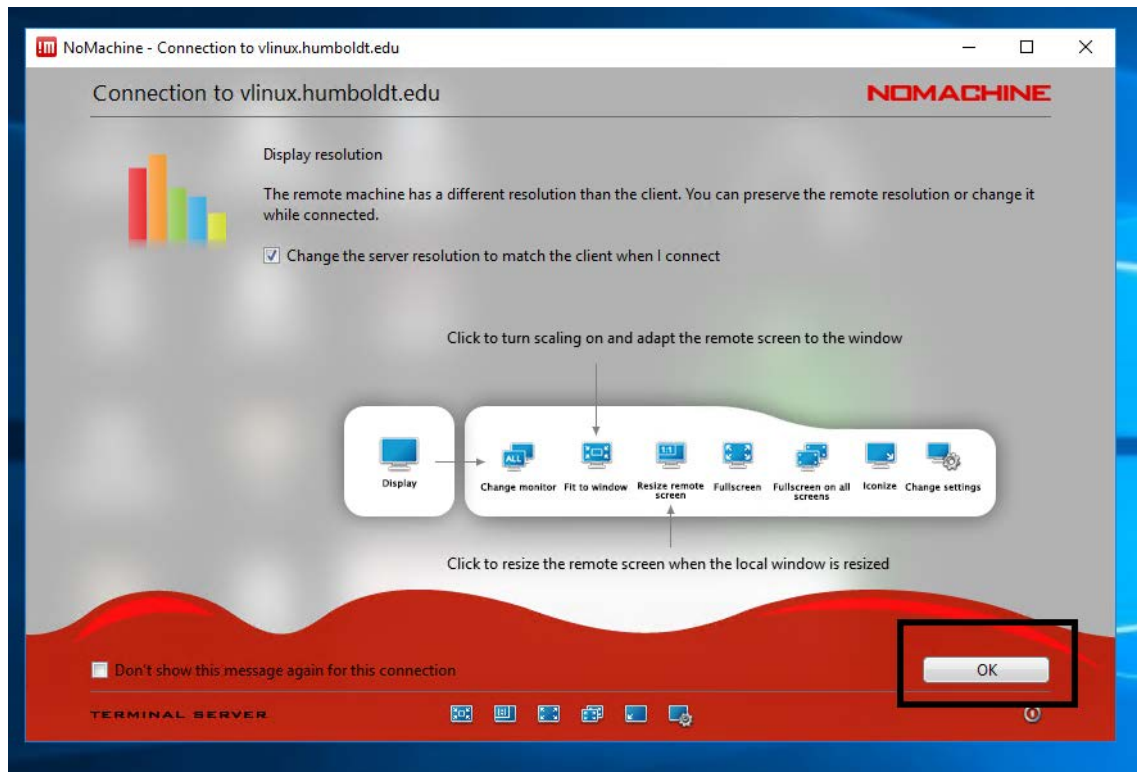
Now enter your HSU Username and Password and click OK  
(only check **Save this password in the connection file** if you are on a trusted computer):



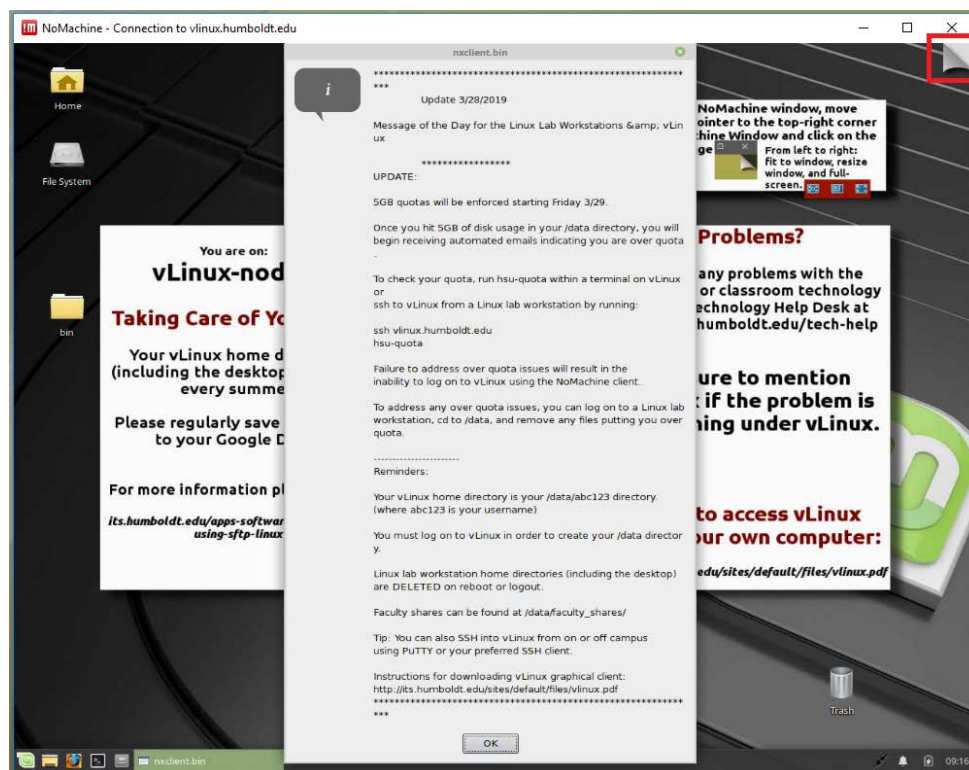
Choose "Create a new virtual desktop" and check the "Save this setting in the connection file."



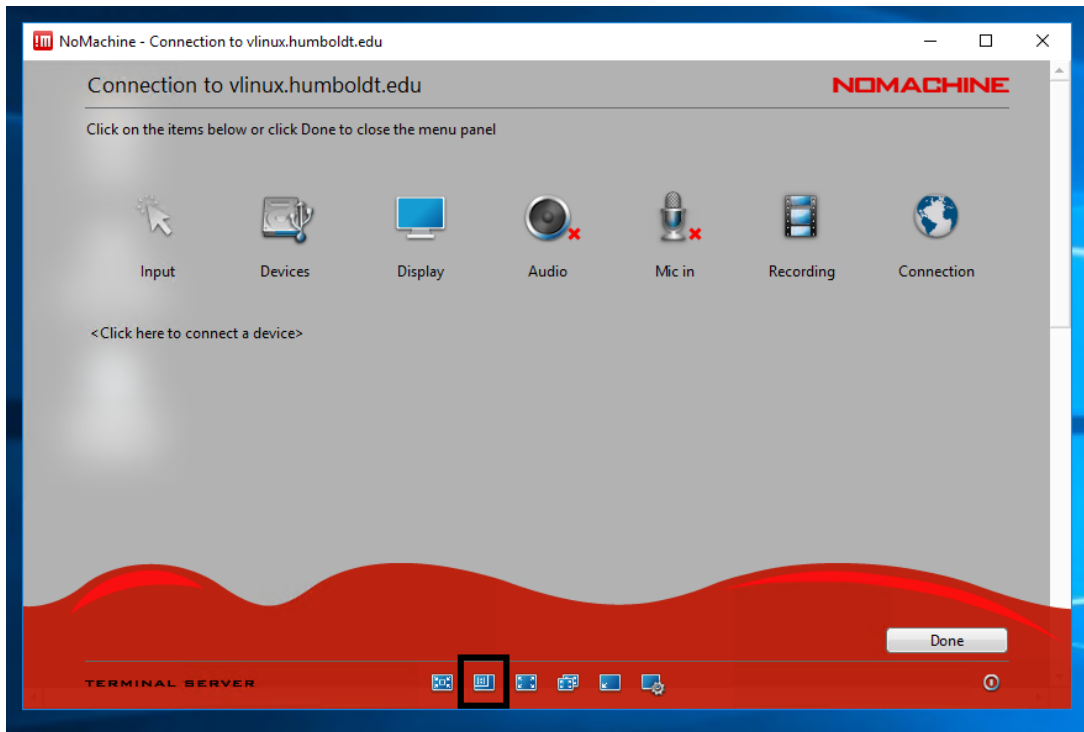
Review menu options and make any appropriate changes to the screen settings; we recommend unchecking **Change the server resolution to match the client when I connect** or clicking on **Resize Remote Screen** (second option from left) for the best experience. Click **OK**:



If you notice scrollbars after logging on to vLinux, click on the top right corner of the NoMachine window to return to the menu options:



Click on the second option from the left.



You should now be able to resize your NoMachine window and the vLinux desktop will adjust its size automatically.

