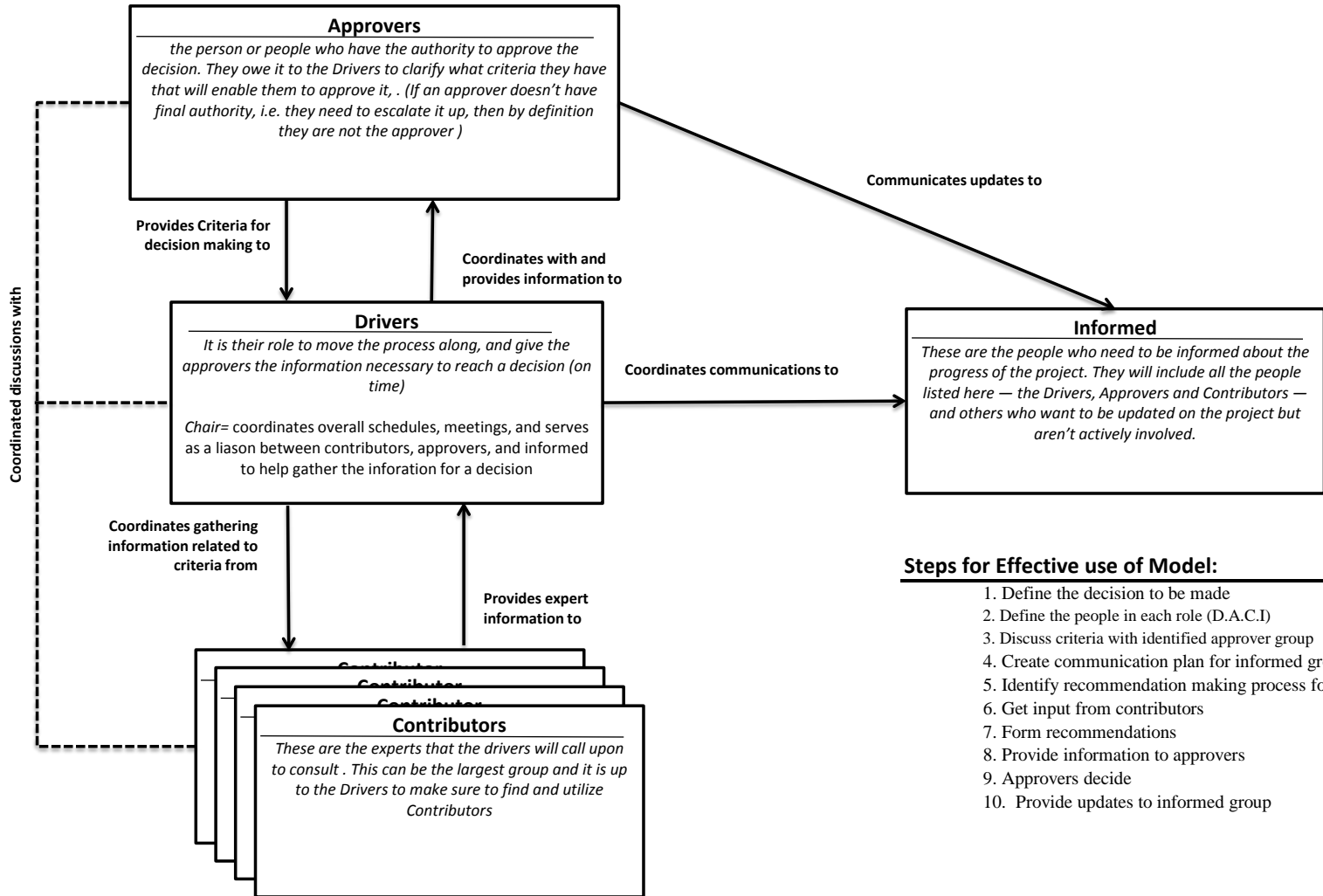


D.A.C.I Decision Model



Steps for Effective use of Model:

1. Define the decision to be made
2. Define the people in each role (D.A.C.I)
3. Discuss criteria with identified approver group
4. Create communication plan for informed group
5. Identify recommendation making process for drivers
6. Get input from contributors
7. Form recommendations
8. Provide information to approvers
9. Approvers decide
10. Provide updates to informed group