

Smart Classroom Instructions

If you are having difficulties using equipment in this room, call extension **3166**

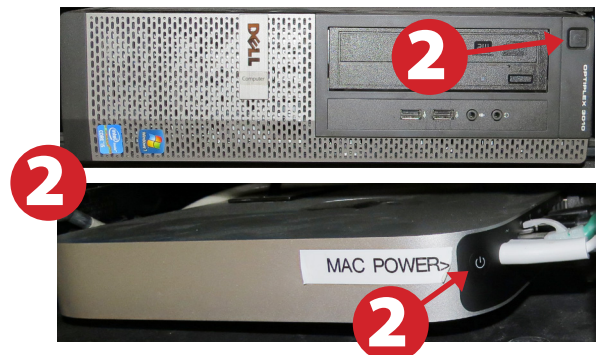
FH 118

Powering Up the System

- 1) To start the projectors, press Main Projector Power and Side Projector Power buttons on the **Crestron Display**. When the Crestron control screen is black, it may be necessary to touch the power button in the upper right corner or the screen itself to take it out of sleep.



- 2) Power up the PC, the Mac Mini (or both). Switch between computers by pressing "Choose Mac or PC" on the **Crestron Display**.
- 3) On the **Crestron Display**, drag your desired projection source(s) to the main projector and the side projector.



- 4) Follow login instructions for:
Mac
 - a. Enter user name and password
 - b. Click enter**Windows**
 - a. Control - Alt - Delete
 - b. Click OK
 - c. Enter user name and password
 - d. Click Enter



Using the Projectors

- 1) Press the **Main Projector Power** button on the **Control Panel** to power up the main projector. Press the **Side Projector Power and Screen Control** button to power up the side projector and lower the side projector's screen.



- 2) On the top row of the **Creston Display**, drag your desired projection sources – PC, Blu-Ray/DVD, VGA Laptop, HDMI Laptop, Document Camera – to the main and side projector areas.



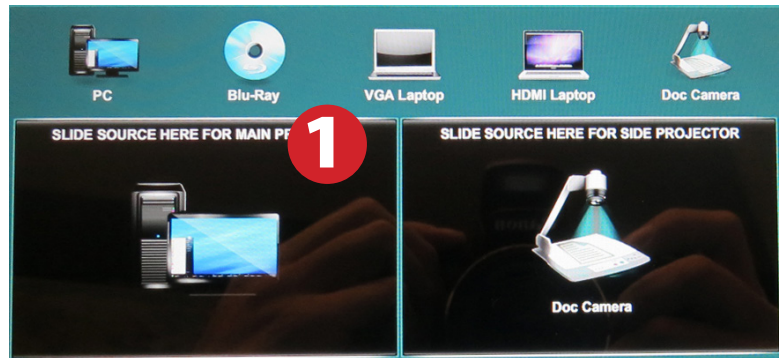
Using the Document Camera

- 1) On the top row of the **Crestron Display**, drag the Document Camera icon to either the main or side projector areas.
- 2) Power on the Document Camera. The power button is located on the front of the right-hand side of the device.
- 3) Position your content on the bed of the Document Camera.
- 4) USB ports and an SD Card slot are available on the back of the device for data transfer.
- 5) When finished, power down the Document Camera by pressing the power button for 5 seconds.



Using the Blu-Ray/DVD Player

- 1) On the top row of the **Crestron Display**, drag the Blu-Ray icon to either the main or side projector areas.



- 2) Insert your Blu-Ray/DVD into the player.



- 3) Use the Blu-Ray/DVD controls on the **Crestron Display** to control playback.



Using a Laptop

- 1) Shut down your laptop.
- 2) Connect the **Laptop Video cable** to the video output port on your laptop. *Please note: the Laptop Video cable is VGA-compatible only. Certain laptop models will require a DVI-to-VGA adaptor or a Mini-VGA adaptor. Consult your owner's manual for further information.*



- 3) For Internet connectivity, connect to HSU Wireless or connect the **green laptop network cable** to your laptop.

Please note: you will need to “register” your laptop before connecting to the campus network. Contact your college ITC or the Help Desk for further information.



- 4) For laptop audio output, connect the **laptop audio cable** to your headphone jack. Make sure your laptop's audio is not muted and that the speakers are powered on.

- 5) On the top row of the **Crestron Display**, drag the VGA Laptop icon to either the main or side projector areas.



- 6) Connect your laptop's AC adaptor to a power outlet and start up your laptop.
- 7) If you still do not see an image, refer to the **laptop troubleshooting guide** later in these instructions.
- 8) When finished, shut down your laptop and disconnect all cables.

Using an HDMI Device

An HDMI cable is provided for connecting devices such as some laptops, iPads/iPhones and Android devices.

- 1) On the top row of the **Crestron Display**, drag the HDMI Laptop icon to either the main or side projector areas.



- 2) Connect your device to the HDMI cable.



Please note: Certain devices, such as iPhones and iPads, will require an HDMI adaptor. Consult your owner's manual for further information.

Laptop Troubleshooting

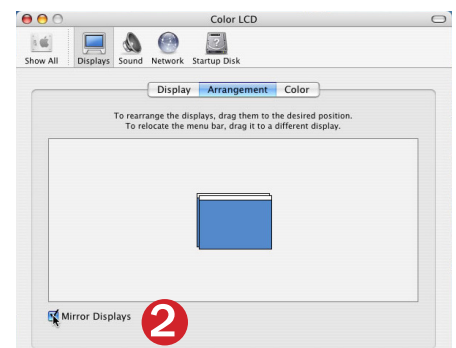
For PC Laptops: Depending on your model of laptop, you may need to toggle the display mode. For example, on many laptops, you must hold down the **function key (FN)** located in the lower left-hand corner of the keyboard, and at the same time, press the **video toggle key**, which is located along the top of the keyboard. Look for the text **CRT/LCD** or an icon of a **display and a laptop**.



Examples of video toggle keys

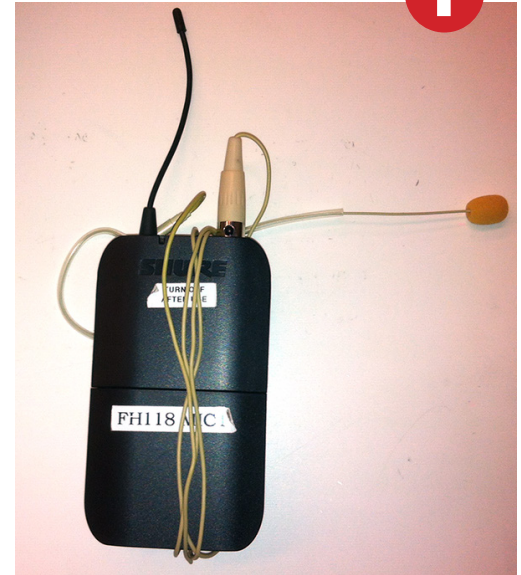
For Mac Laptops:

- 1) Go to **System Preferences/Display**.
- 2) Select the **Arrangement** tab and check the **Mirror Displays** box.



Using the Wireless Microphone

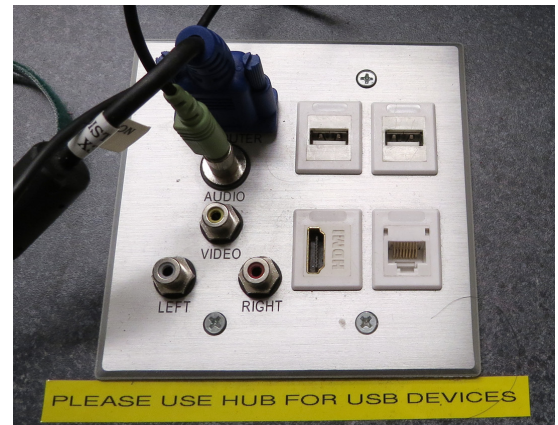
- 1) On the console, open the drawer marked **Mic Remote Battery Storage** and obtain the wireless microphone.
- 2) Move the switch on the top of the microphone from **OFF** to **ON**.
- 3) When the system power is on, the wireless microphone will work when powered on. **Mic 1 slider** will control volume.



Using a USB Device

- 1) The computer is outfitted with two open USB ports for connecting USB devices.

The hub is located on top of the console, towards the back, on the left side.



Powering Down the System

- 1) Power down Computer

Mac

Apple Menu -> Shut Down -> Click OK

Windows

Start Menu -> Shut Down -> Click OK

- 2) Press the Power button in the upper right corner of the Crestron display to shut down all other devices.



Who to Call for Assistance

If you are having any difficulties using equipment in this room, call extension **3166**