

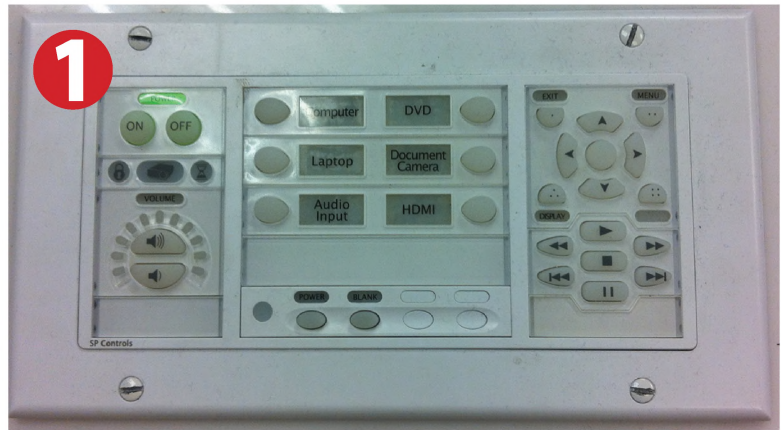
Smart Classroom Instructions

*If you are having difficulties using equipment
in this room, call extension **3166***

FH25

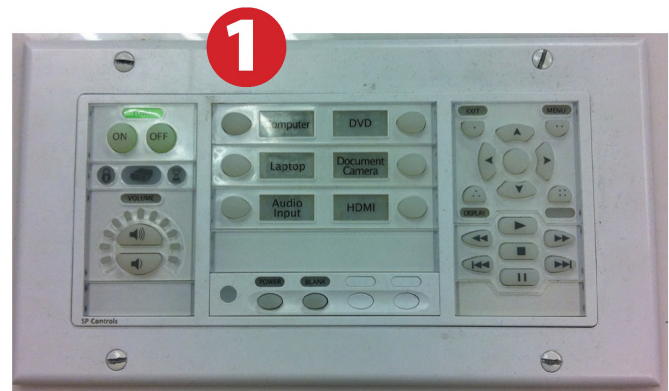
Projector

- 1) Press the **On** button on the video control panel.
- 2) Make sure the **atlona switch** is set to the right video output.



Using Console Computer

- 1) Set video control panel to **Computer**.
- 2) Press **Power** button on the PC
- 3) Follow login instructions for: **Windows**
 - a. Control - Alt - Delete
 - b. Click OK
 - c. Enter user name and password
 - d. Click Enter



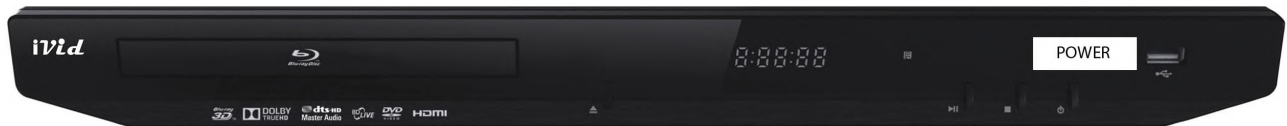
Using a Laptop

- 1) Turn on your laptop
- 2) Press **Laptop button** on video control panel
- 3) Connect the **Laptop Video cable** to the video output port on your laptop (**HDMI** or **VGA**).
- 4) Connect your laptop's AC adapter to a power outlet and start up your laptop.
- 5) If you still do not see an image, refer to the **laptop troubleshooting guide** later in these instructions.
- 6) When finished, shut down your laptop and disconnect all cables.
- 7) Proceed to shutting down the rest of the equipment. Follow the instructions later in this guide, **Powering Down the System**.



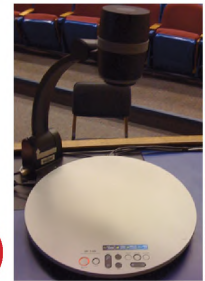
Using the Blu-Ray/DVD Player

- 1) Press the **DVD button** on the white console control panel. This will illuminate the controls on the right-hand side of the white console control panel.
- 2) Press the **Eject button** on the white control panel and insert your Blu-Ray or DVD. Press the **Eject button again** to retract the tray and begin playback. Use the buttons on the white control panel (Menu, Fast Forward, etc.) to control playback. When finished, press **Eject** and retrieve your disc, then press **Eject** one last time to retract the tray.



Using the Document Camera

- 1) Set video control panel to **Document Camera**.
- 2) Power on the **Document Camera**.
Note that there is no need to have the computer turned on to use the document camera.
- 3) Press the **Live/Win** button to switch between showing the Windows desktop and showing the camera image full-screen.



Using an HDMI Device

An HDMI cable is provided for connecting devices such as some laptops, iPads/iPhones and Android devices.

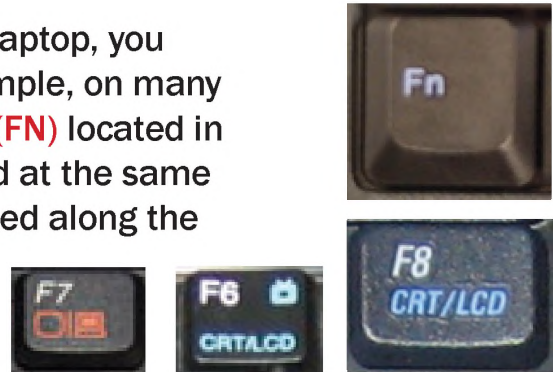
- 1) Set video control panel to **HDMI**
- 2) Connect your device to the **HDMI cable**.



Please note: Certain devices, such as iPhones and iPads, will require an HDMI adaptor. Consult your owner's manual for further information.

Laptop Troubleshooting

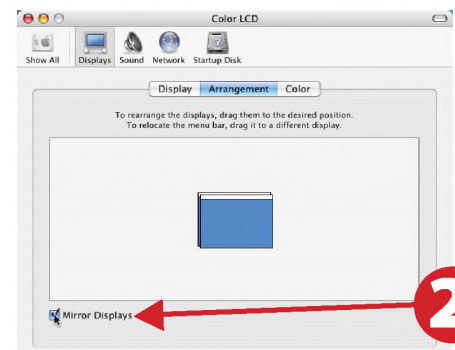
For PC Laptops: Depending on your model of laptop, you may need to toggle the display mode. For example, on many laptops, you must hold down the **function key (FN)** located in the lower left-hand corner of the keyboard, and at the same time, press the **video toggle key**, which is located along the top of the keyboard. Look for the text **CRT/LCD** or an icon of a **display and a laptop**.



Examples of video toggle keys

For Mac Laptops:

- 1) Go to **System Preferences/Display**.
- 2) Select the **Arrangement** tab and check the **Mirror Displays** box.



Powering Down the System

- 1) Press the Off button on the video control panel
- 2) Power down Computer

Windows

Start Menu -> Shut Down ->
Click OK



Who to Call for Assistance

If you are having any difficulties using equipment in this room, call extension **3166**