

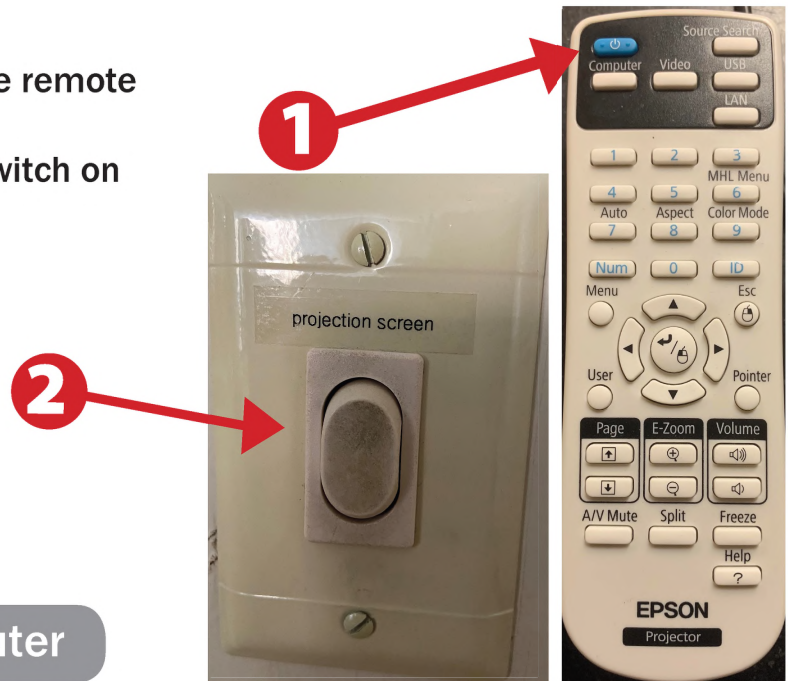
Smart Classroom Instructions

WILDLIFE AND FISHERIES 166

If you are having difficulties using equipment in this room, call extension **3166**

Projector

- 1) Press the **Power** button on the remote control to turn on the projector.
- 2) Lower projector screen using switch on wall.



Using the Console Computer

- 1) Locate the computer tower in the cabinet. Press **Power** button.
- 2) Login using your HSU user name and password when prompted.



Using a Laptop

- 1) Connect your laptop to the **Laptop VGA** cable and plug your laptop's AC adapter into a power outlet and start up your laptop.
- 2) For Internet connectivity, connect to the HSU Wireless connection that is available.
- 3) If you still do not see an image, refer to the **laptop troubleshooting guide** later in these instructions.
(Note that VGA cables do not transfer audio, so there will be no audio only video.)
- 4) When finished, shut down your laptop and disconnect all cables.
- 5) Proceed to shutting down the rest of the equipment. Follow the instructions later in this guide, **Powering Down the System**.



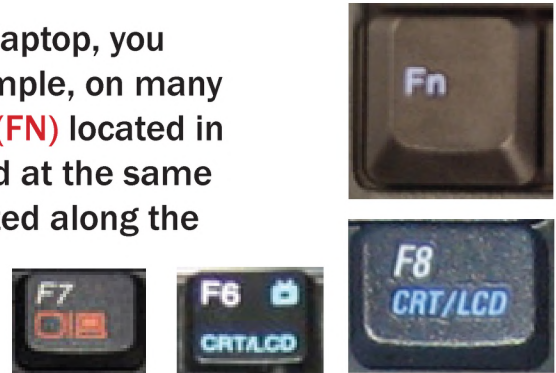
Playing a DVD/VCR

- 1) Press **Source Search** on the projector remote.
- 2) Insert media into DVD or VCR and operate with remotes.
- 3) Adjust volume for DVD, VCR and computer using amplifier.



Laptop Troubleshooting

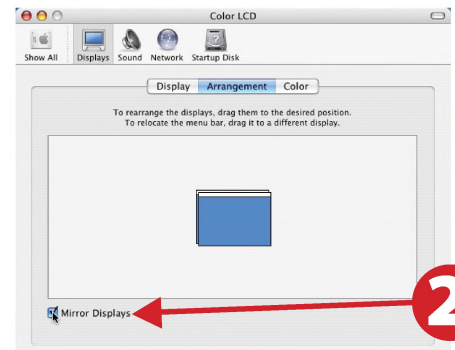
For PC Laptops: Depending on your model of laptop, you may need to toggle the display mode. For example, on many laptops, you must hold down the **function key (FN)** located in the lower left-hand corner of the keyboard, and at the same time, press the **video toggle key**, which is located along the top of the keyboard. Look for the text **CRT/LCD** or an icon of a **display and a laptop**.



Examples of video toggle keys

For Mac Laptops:

- 1) Go to **System Preferences/Display**.
- 2) Select the **Arrangement** tab and check the **Mirror Displays** box.



Powering Down the System

- 1) Press the **Power** button on the white remote control
- 2) Power down Computer
Windows
Start Menu -> Shut Down -> Click OK



Who to Call for Assistance

If you are having any difficulties using equipment in this room, call extension **3166**